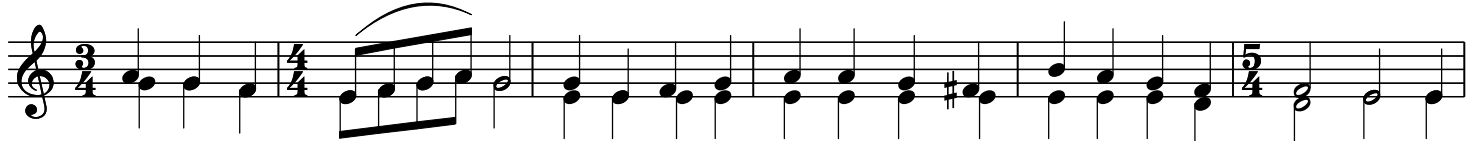


FIMI FOR METROPOLITAN NATHANAEEL OF CHICAGO

Greek



Να - θα - να - ίλ, του σε - βα - σμι - ω - τά - του και Θε - ο - προ - βλή - του
Na - tha - na - il tou se - va - smi - o - ta - tou ke The - o - pro - vli - tou



Μη - τρο - πο - λί - του της Α - γι - ω - τά - της Μη - τρο - πό - λε - ως Σι - κα - γου, η -
Mi - tro - po - li - tou tis A - ghi - o - ta - tis Mi - tro - po - le - os Si - ka - ghou, i -



- μών δε πα - τρός και ποι - με - νάρ - χου πολ - λά τα έ - τη.
- mon dhe pa - tros ke pi - me - nar - chou pol - la ta e - ti.

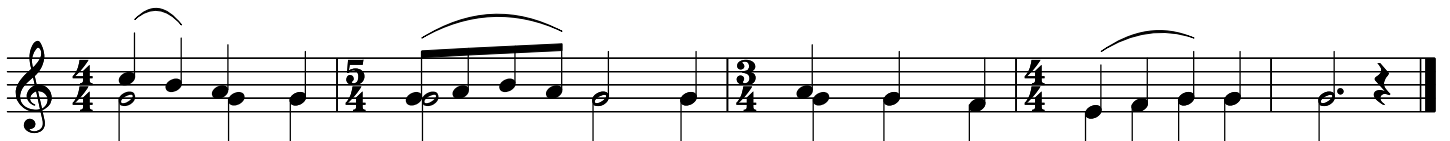
English



Na - than - ael, most re - ve - rend and God - cho - sen Me - tro - po - li -



- tan of the Ho - ly Me - tro - po - lis of Chi - ca - go, our spi - ri - tual



fa - ther and shep - herd, may God grant you ma - ny years.