

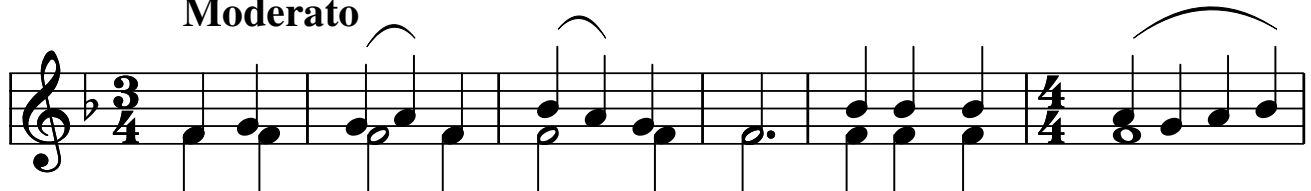
**KONTAKION OF ST. ANNA'S CONCEPTION OF THE THEOTOKOS  
ΕΟΡΤΑΖΕΙ ΣΗΜΕΡΟΝ**

December 9

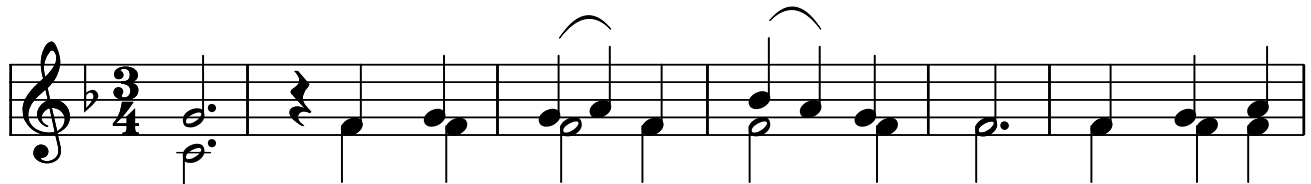
Ἦχος δ΄

Model Melody: "Ἐπιφάνις Σήμερον"

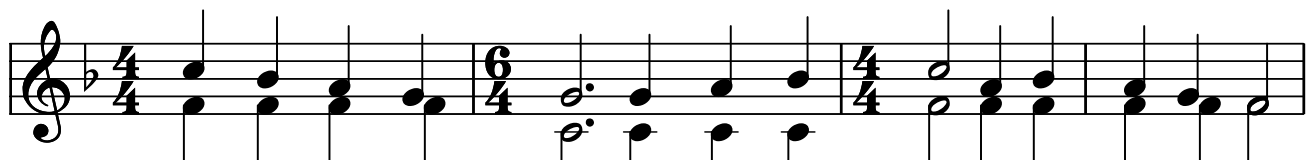
**Moderato**



E-or - τά - ζει σή - με - ρον, η οι - κου - μέ -  
E-or - ta - zi si - me - ron, i i - kou - me -



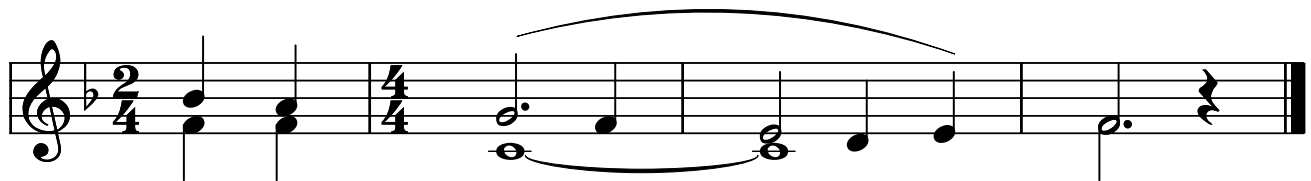
- νη, τήν τής Ἄν - νης σύλ - λη - ψιν, γε - γε - νη -  
- ni, tin tis An - nis sil - li - psin, ghe - ghe - ni -



- μέ - νην εν Θε - ώ, καί γάρ αυ - τή α - πε - κύ - η - σε,  
- me - nin en The - o, ke ghar af - ti a - pe - ki - i - se,



τήν υ - πέρ λό - γον, τόν Λό - γον κυ -  
tin i - per lo - ghon, ton Lo - ghon ki -



- ή - σα - σαν.  
- i - sa - san.