

**APOLYTIKION OF THE FOREFEAST OF THE NATIVITY OF CHRIST  
O BETHLEHEM PREPARE**

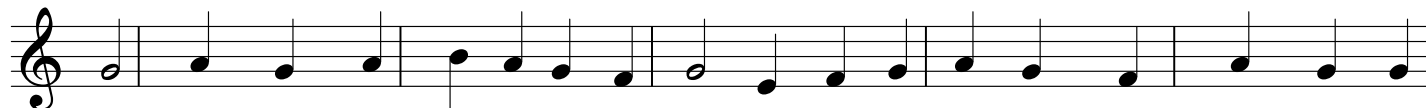
December 20 to 23

Fourth Tone (Soft Chromatic)

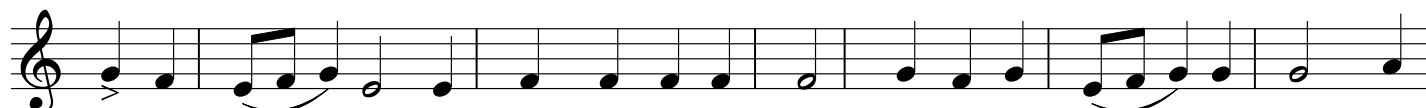
N. Takis



O Beth-le-hem pre-pare, E-den is o-pened up for all; and Eph-ra-tha, take



heed, make your-selves read-y and pre-pare; the Tree of Life has bloomed forth from the



Ho-ly Vir - gin; and from her ho-ly womb, spir-i-tual Par - a - dise, where-



- in is found to grow the di-vine, res-cu-ing Tree, and as we eat there-of we shall all



live, and shall not die as did Ad - am. For Christ is born now to



raise the im - age that had fall - en be - fore - hand.